

# Important Notice – Read Me First! for Power Mac® G4 (AGP Graphics) Users

**Before installing the Encore/ST™ G4 Duet, you MUST verify it will work with your system!**

## Introduction

Some early-production Power Mac G4 computers (only AGP Graphics models) were manufactured with an application specific integrated circuit (ASIC) that prevents multiprocessing (use of a multiprocessor); these specific models are *not* compatible with the Encore/ST G4 Duet.

The affected models contain a revision 3 Uni-North ASIC; instructions on how to identify the part used in your system follow. *Other Power Mac G4 (AGP Graphics) models are compatible with the Encore/ST G4 Duet.*

## The Tools You'll Need

If your system is running any version of Mac OS X, you will use the Terminal application. If your system is running Mac OS 9.2.x, you will use Apple System Profiler (see “How to Identify Problem Machines in Mac OS 9.2” below).

## How to Identify Problem Machines in Mac OS X

1. Open the Terminal application (located within the Utilities folder found in the Applications folder).
2. From the command line, type the following text:  
`ioreg -n uni-n | grep device-rev` (Figure 1), and press the return key.
3. In the line following the text you typed, find the number following the words “device-rev” (Figure 2). If the number following the seven zeros is 3, your system is not compatible with the Encore/ST G4 Duet. If the number following the seven zeros is any number other than 3, your system is compatible with the Duet and you may install it.

If you have an incompatible system, you may still upgrade it with a fast Sonnet *single* processor card. If you have already purchased this product, you should return it immediately, and exchange it for a single processor upgrade card.

## How to Identify Problem Machines in Mac OS 9.2

1. From the desktop, under the Apple menu, select Apple System Profiler.
2. From the menu, select File > New Report... (Figure 3).
3. In the *New Report* window, check only the System Profile and Hardware Overview check boxes, and then click OK (Figure 4).

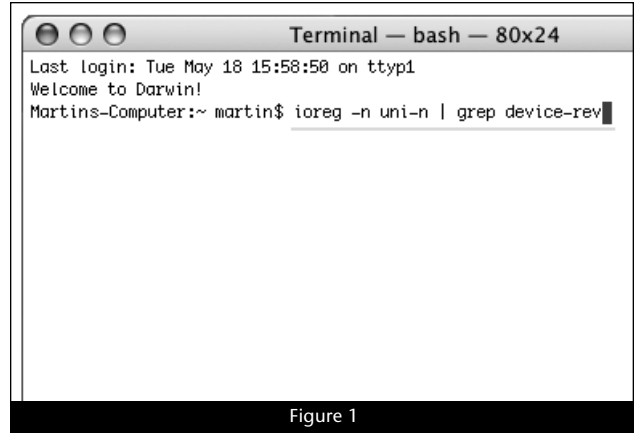


Figure 1

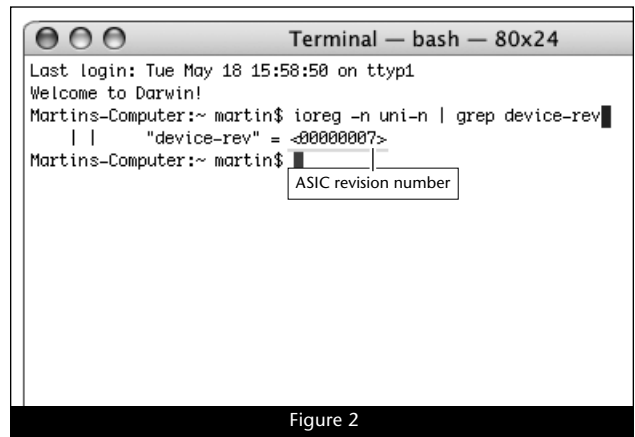


Figure 2

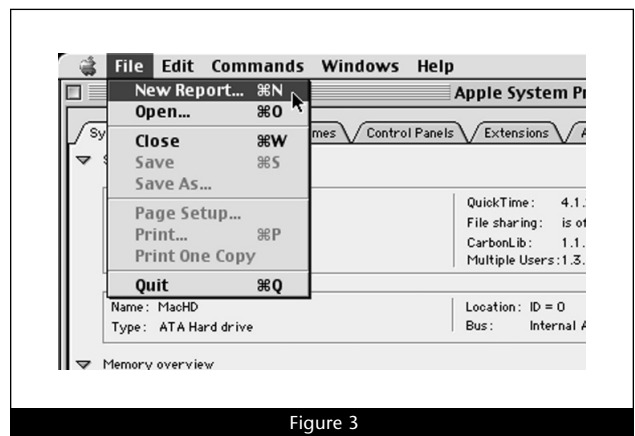


Figure 3

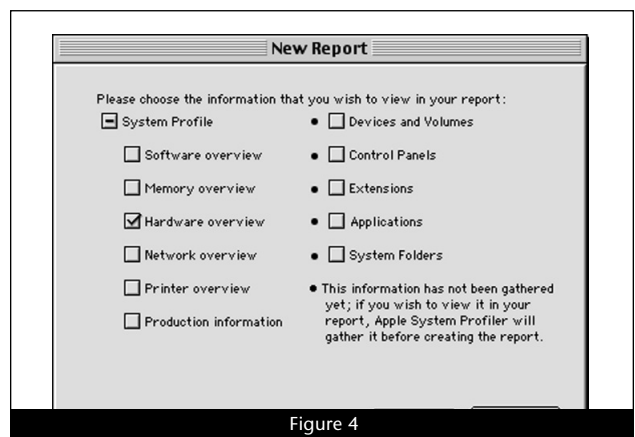


Figure 4

4. When the *ASP report* window appears, click the radio button next to “Text document” to reformat the report (Figure 5).

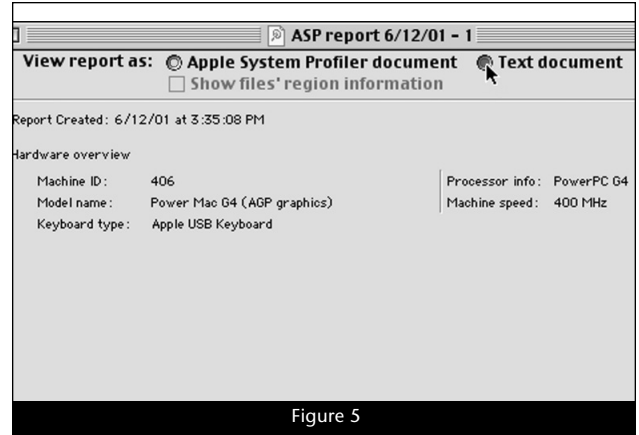


Figure 5

5. In text view, the last item listed under the Hardware overview section is “uni-n:” (Figure 6). If the number next to “uni-n:” is 3, your system is not compatible with the Encore/ST G4 Duet. If the number is anything other than 3, your system is compatible with the Duet and you may install it.

If you have an incompatible system, you may still upgrade it with a fast Sonnet *single* processor card. If you have already purchased this product, you should return it immediately, and exchange it for a single processor upgrade card.

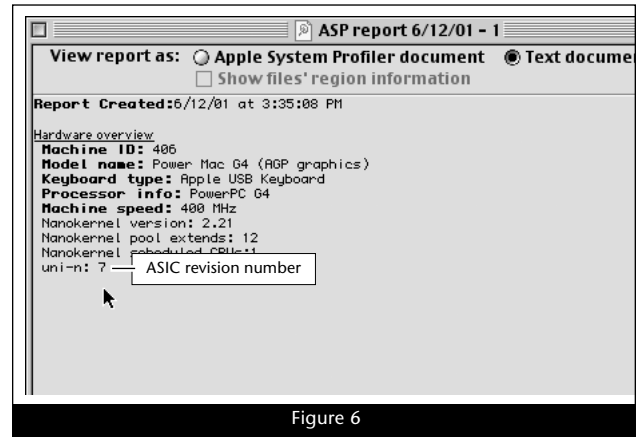


Figure 6